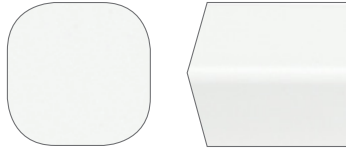


New! Colors and Finishes
New Boutique Colors

Three all-new boutique colors include a highly versatile powder coated warm white and two modern metallics finished by means of an exclusive five-step technique.

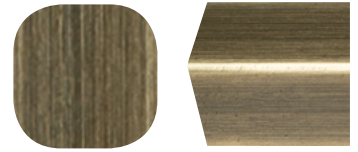
Designer White (10)

A versatile warm white with a smooth finish and a hint of gloss.



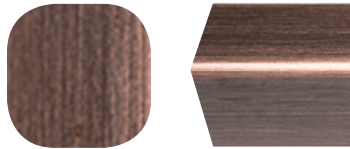
Urban Bronze* (70)

A warm bronze enhanced with deep character and a satin finish.



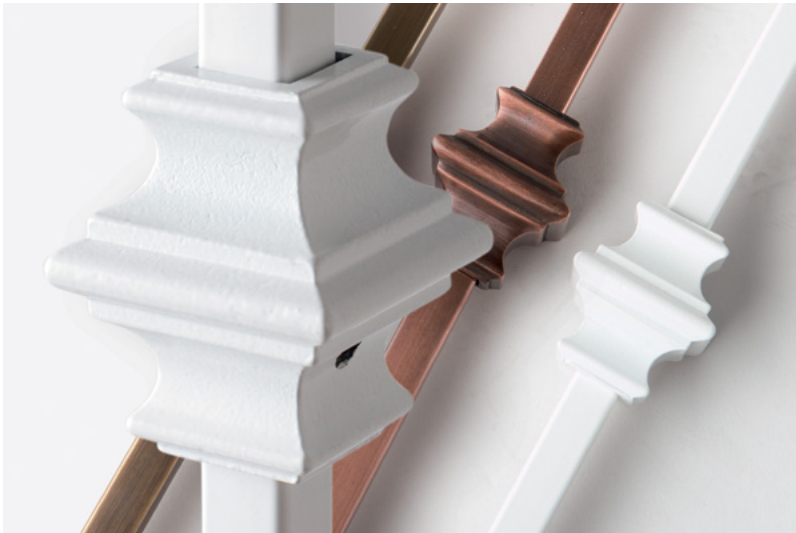
Burnished Copper* (90)

A fresh take on the look of classically aged copper with a satin finish.



**Not powder coated.*

Burnished Copper



Designer White



Urban Bronze

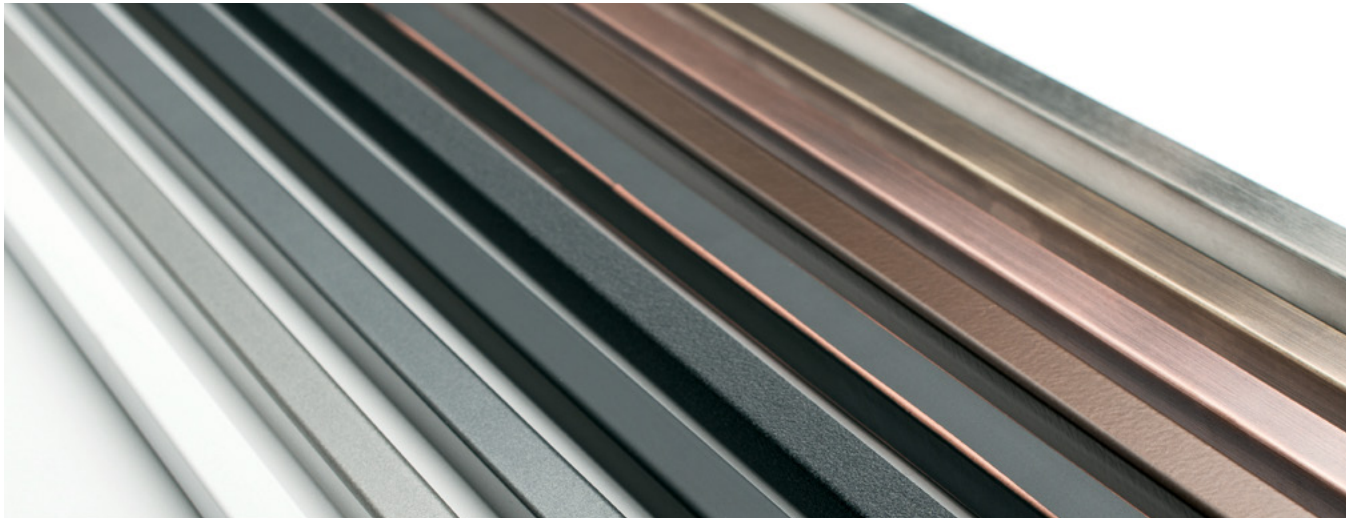


Product images shown in this catalog are for illustrative purposes only. Although we have made every effort to display colors accurately, the physical product(s) may vary slightly from these images.

1 800 663 6356 • geobeze.com

Colors and Finishes

High Performance Powder Coating with Stylish Color Options



Specialty

Stainless Steel* (SS)

Cool and contemporary stainless steel with a satin finish.

**Not powder coated.*



Brushed Stainless Steel* (BS)



Antique Nickel* (AN)



Complementary accessories for the stainless steel or powder coated spindles are available in these finishes.

Classic

Satin Black (30)

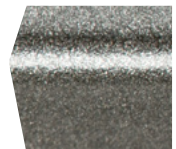
An understated matte black finish with endless versatility.



Pavestone (50)

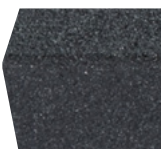
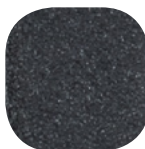
A warm and versatile grey with a smooth finish and hint of gloss.

New!



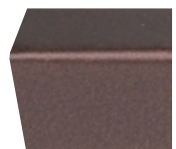
Wrinkled Black (40)

A beautifully textured finish resistant to signs of wear and tear.



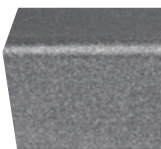
Burnt Penny (60)

A smooth finish with a hint of gloss enhanced by a rich, warm hue.



Gun Metal Grey (45)

A cool and sophisticated grey with a smooth finish and hint of gloss.



Midnight Copper (80)

A matte black finish accented with hand-painted copper edges.

